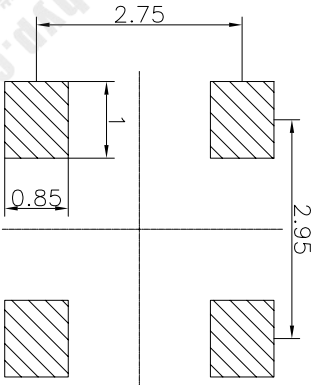
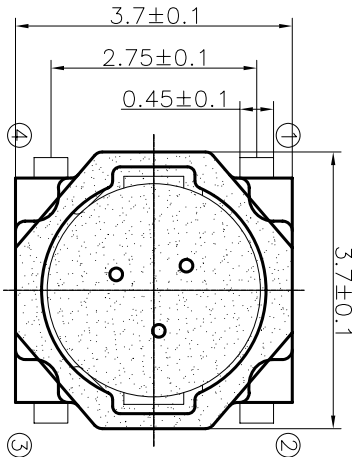


REV	ECN NO.	APPD
A	HC-16-0121	PRIQUOM

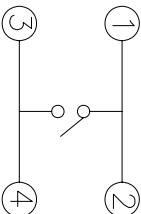
规格 Specifications

额定负荷 Rating	DC 12V/50mA	
接触电阻Contact Resistance	100mΩ max.	
绝缘电阻Insulation resistance	DC100V 60S 100MΩ min.	
抗电强度Dielectric strength	AC250V (50~60Hz) 60S min.	
操作力Operation force	160±30gf	250±50gf
寿命试验Operating life	100,000cycles	70,000cycles
行程Travels	0.13±0.05mm	



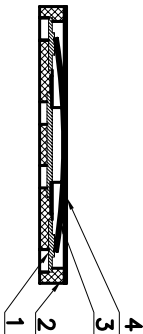
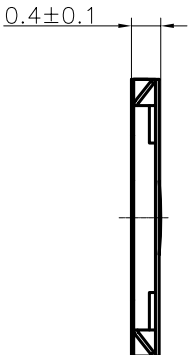
RECOMMENDED P.C.B. LAYOUT

安装尺寸图



CIRCUIT DIAGRAM

回路图



PRODUCT NO.: 1TS017C-*****-CT

轻触开关
3.7X3.7系列
外形:
材质:
产品高度(H):
操作力度:
手感:
编带
非编带,不启用
0=LCP
1=新增材质
依次增加
0.40=0.40mm
160=160±30gf
250=250±50gf
0=常规
1=大手感
2=小手感

4	PE-FILE	1	PE	/
3	CONTACT	1	STAINLESS STEEL	Ag-PLATED
2	HOUSING	1	LCP	BLACK
1	TERMINAL	1	BRONZE	Ag-PLATED
ITEM	PART NAME	QUANTITY	MATERIAL	FINISH
X. ± 0.3	X' ± 3'	UNITS	MM	
X ± 0.2	X' ± 2'	MAT'L		
.XX ± 0.1	.XX' ± 1'	FINISH		
.XXX ± 0.05	.XXX' ± 0.5'			
NAME(INTENDED USE)		HON YUAN		
3.7X3.7 TACT SWITCH		HON YUAN PRECISION IND. CO.,LTD.		
PART NO.(INTENDED USE)		SHENZHEN, CHINA, R.O.C.		
1TS017C-*****0		TITLE:		
APPD: ZO 2016-11-12		PRODUCT DRAWING		
CHKD: M.H.Li 2016-11-12		DWG NO.: 1TS017C		
DRY.Y.Chen 2016-11-12		SCALE SHEET REV.		
		10/1 1/1 A		