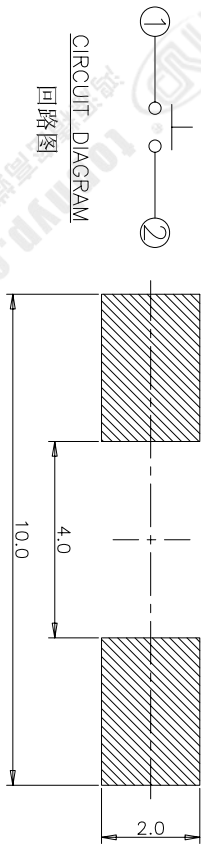


REV	ECN NO.	APPD
A	HC-14-0030	PROLOM
B	HC-15-0058	PROLOM

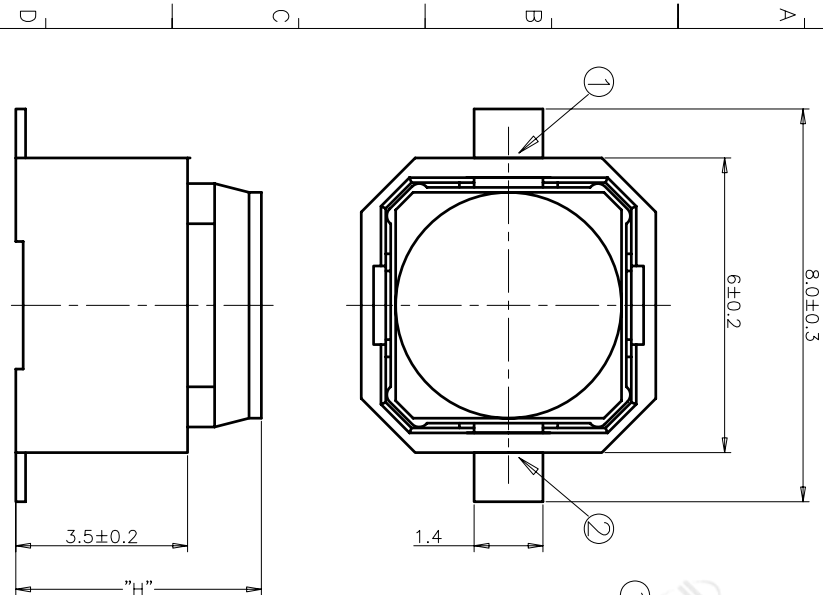
规格 Specifications

额定负荷	Rating	DC 12V/50mA	
接触电阻	Contact Resistance	100mΩ max.	
绝缘电阻	Insulation resistance	DC100V 60S	100MΩ min.
抗电强度	Dielectric strength	AC250V(50~60HZ) 60S min.	
操作力	Operation force	≤180±30gf	≥250±50gf
寿命试验	Operating Life	100,000cycles	100,000cycles
行程	Travels	看左侧编码说明	



RECOMMENDED P.C.B. LAYOUT

安装尺寸图



PRODUCT NO.: 1TS009***** - CT

轻触开关 TMRV 系列

外形:

A=弧盖弯脚

B=平盖弯脚

C=弧盖平脚

D=平盖平脚

按钮颜色:

底座颜色:

盖板颜色:

操作力度:

手感:

材质:

产品高度(H):

行程Travels

非编带

非编带, 不启用

0=LCP

1=新增材质

依次增加

430=4.3mm (行程: 0.7±0.2mm)

500=5.0mm (行程: 1.3±0.3mm)

0=常规

1=大手感

2=小手感

3=特殊手感

初始颜色

则不启用

160=160±30gf

180=180±30gf

250=250±50gf

260=260±50gf

280=280±50gf

300=300±50gf

按钮颜色:

底座颜色:

盖板颜色:

操作力度:

手感:

材质:

产品高度(H):

行程Travels

非编带

非编带, 不启用

0=LCP

1=新增材质

依次增加

ITEM	PART NAME	QUANTITY	MATERIAL	FINISH
5	COVER	1	LCP	BLACK
4	ACTUATOR	1	SILICONE	/
3	CONTACT	1	STAINLESS STEEL	Ag-PLATED
2	TERMINAL	2	BRASS	Ag-PLATED
1	HOUSING	1	LCP	BLACK

X. ± 0.3	X' ± 3'	UNITS	MM	NAME(INTENDED USE)	TMRV SERIES	TACT SWITCH	PART NO.(INTENDED USE)	TITLE:	PRODUCT DRAWING
X ± 0.2	X' ± 2'	MAT'L							
XX ± 0.1	XX' ± 1'	FINISH							
XXX ± 0.05	XXX' ± 0.5'								
THESE DIMENSIONS AND SPECIFICATIONS ARE THE PROPERTY OF HON YUAN PRECISION IND. CO., LTD. AND SHALL NOT BE REPRODUCED OR USED IN ANY MANNER WITHOUT THE WRITTEN PERMISSION OF HON YUAN PRECISION IND. CO., LTD.									
QTY				APPD:					
CHKD:				DWG NO.: 1TS009D					
DR: Y.Y.Chen 2015-11-10				SCALE SHEET REV. 10/1 1/1 B					